

資訊工程學系 專題發表

iClone 3D動畫製作

指導老師：陳兆南

組員：胡仁柏、林少軍、陳佑宣

核災夢魘

- 故事簡介：
- 在這個核能發電的時代，雖然讓生活便利，但是也存在著安全的危機，然而地震發生了，反應爐壞了，全城民眾必須撤出，而這些事只是場噩夢，也因這場夢讓總統在會議上停止興建核電案。

製作的流程(1)

構思主題、劇本



劇本、腳本



場景製作、人物設定



修正



一次剪輯



沒有音效的影片

製作的流程(2)

沒有音效的影片



配音、各種音效



二次剪輯



字幕、圖片



作品輸出

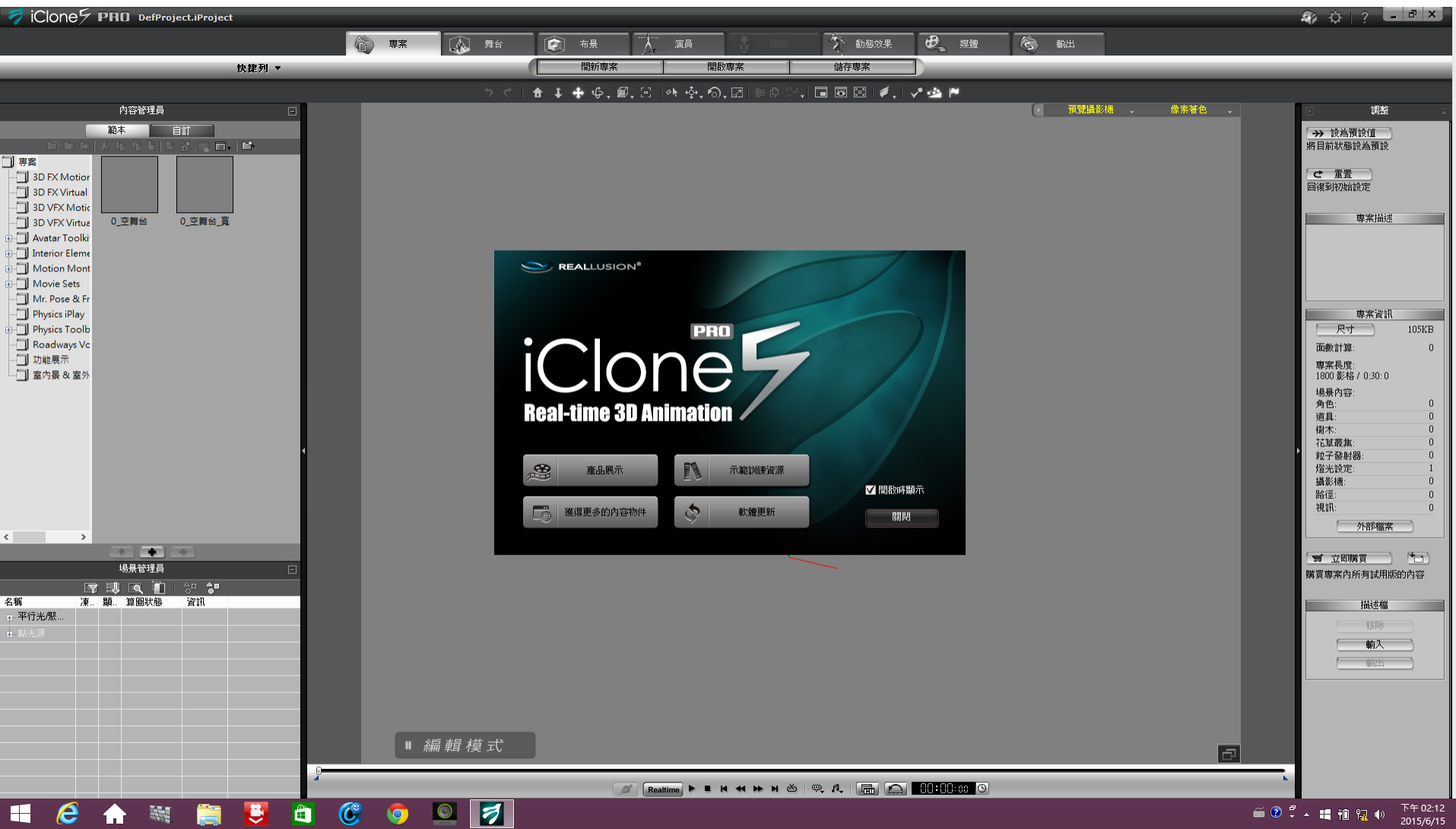


核災夢魘

使用工具

- iClone v5.51
- Avid Media Composer
- 2台電腦

製作過程-主程式畫面



製作過程-專案

The screenshot displays the iClone PRO software interface. The main window shows a 3D rendered scene of a city street with a traffic light in the foreground and a car in the distance. The interface is divided into several panels:

- Content Manager (Content Manager):** Located on the left, it lists various assets such as 3D FX, Avatar Toolkits, and Motion Montages.
- Scene Manager (Scene Manager):** Located at the bottom left, it provides a table for managing scene elements.
- Settings Panel (Settings Panel):** Located on the right, it contains various configuration options and statistics for the current scene.

The 'Scene Manager' table is highlighted with a red box and contains the following data:

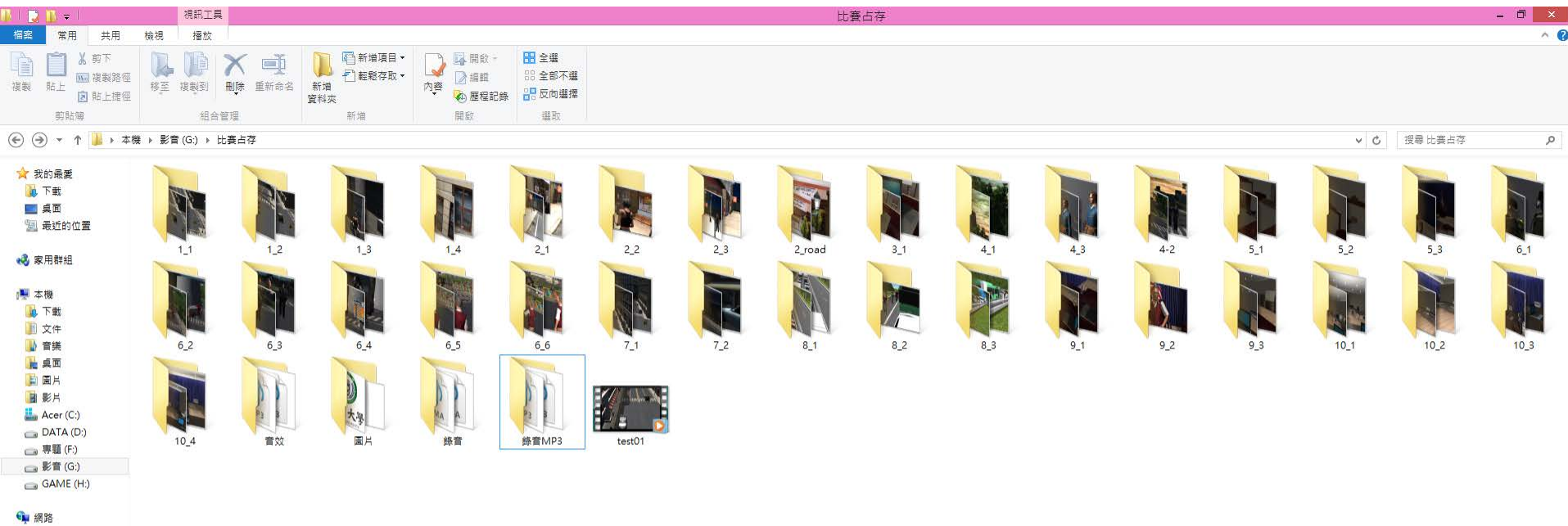
名稱	凍	關	算圖狀態	資訊
角色	<input type="checkbox"/>	<input checked="" type="checkbox"/>	一般	
道具	<input type="checkbox"/>	<input checked="" type="checkbox"/>	一般	
場景與環境				
天空	<input checked="" type="checkbox"/>	<input checked="" type="checkbox"/>	一般	
攝影機				
平行光燈...				
點光源				

The 'Settings Panel' on the right shows the following information:

- 調整 (Adjust):** Includes buttons for '設為預設值' (Set as default), '將目前狀態設為預設' (Set current state as default), '重置' (Reset), and '回復到初始設定' (Restore to initial settings).
- 專案描述 (Project Description):** A section for entering project details.
- 專案資訊 (Project Information):** Displays statistics such as '尺寸' (Size: 128412KB), '面數計算' (Polygon count: 318488), '專案長度' (Project length: 1800 影格 / 0:30:0), and '場景內容' (Scene content) including characters, props, and environment elements.
- 外部檔案 (External Files):** A section for managing external files.
- 描述檔 (Description File):** Includes buttons for '移除' (Remove), '輸入' (Import), and '輸出' (Export).

The 'Camera' dropdown menu in the top right of the scene view is circled in red, indicating the current camera settings.

製作過程-儲存專案位置與路徑



製作過程-剪輯軟體



Media Composer® | Software

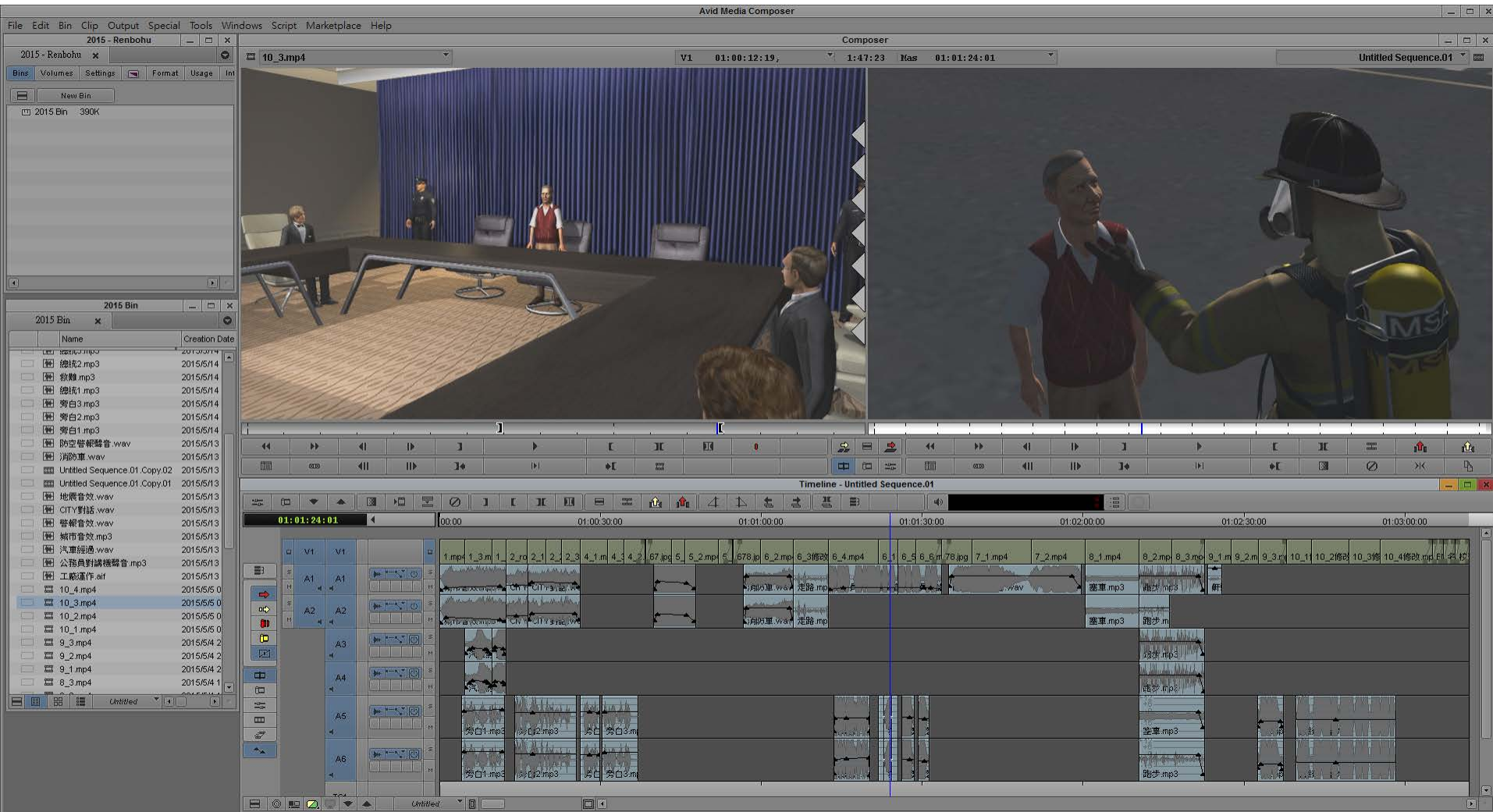
Activated:

- Symphony Option
- NewsCutter Option

Media Composer 8.0
(C)2014 Avid Technology, Inc. All rights reserved.
Use of this software is subject to a related license agreement.

License Type: Floating
Computer Name: renbo

製作過程-剪輯過程畫面



感謝聆聽

